

District:

## MONROE

### LeFLORE County

Post Office Box 10  
 Monroe, OK 74947-0010  
 (918) 658-3516

## Community Characteristics

Community Group: H2

### Socioeconomic Data

	District Community	State Average
Ethnic Makeup Based upon Fall Enrollment:		
Caucasian	61%	58%
Black	3%	9%
Asian	1%	2%
Hispanic	4%	16%
Native American	31%	14%
Average Property Valuation per ADM (12/2016)	\$47,888	\$49,623
Students Eligible for Free/Reduced Lunch	74%	62%

### U.S. Census Data

	District	State
American Community Survey (2011-2015 5-Year Estimates):		
District Population	1,110	7,461
Poverty Rate	13%	17%
Unemployment Rate	6%	6%
Average Household Income	\$59,698	\$63,890
Single-Parent Families	19%	34%
Highest Educational Level for Adults Age 25+		
College Degree	20%	24%
H.S. Diploma w/o College Degree	66%	63%
Less than 12th Grade Education	14%	13%

### Preparation, Motivation and Parental Support

KG-3rd Graders Receiving Reading Remediation	28%	39%
Average Number of Days Absent per Student	3.8	9.4
Mobility Rate (Incoming Students)	53%	10%
Student Suspension Ratio: ( <i>Higher number is better.</i> )		
1 suspension (<= 10 days) per ___ students	None	13.7
1 suspension (> 10 days) per ___ students	None	171.4
Parents Attending at least 1 Parent/Teacher Conf.	80%	74%
Patrons' Volunteer Hours per Student	0.8	3.4

### Juvenile Offenders & Offenses (OJA)

One out of every ___ students was charged.	None Reported	119.2
Of those charged, each averaged ___ offense(s).	0.0	2.2
Of those charged, ___ were alleged gang members.	0	0.4

## Symbols Used on this Report:

ADM = Average Daily Membership (Average Enrollment)

FTE = Full Time Equivalent

NA = Not Applicable

\*\* = Data Protected by Privacy Laws

FTR = School/District Failed to Respond with Useable Data

DNA = Data Not Available from Providing Agency

RM = Revised Methodology



Office of Educational  
 Quality and Accountability

840 Research Parkway, Suite 455  
 Oklahoma City, OK 73104  
 (405) 522-5399 Fax: (405) 525-0373  
 Web Address: www.EdProfiles.info

## District Educational Process

### Grade Organization, District Area & Enrollment

This district offered grades EC-8 in school year 2015-2016. It was comprised of 1 Elementary School(s), 0 MS/JHS, and 0 High School(s). The district covered 51 square miles, with 2.3 students per square mile.

	District	Community Group Avg.	State Avg.
2014/2015 Average Enrollment (ADM)	106.2	152.8	1,299.4
2015/2016 Average Enrollment (ADM)	116.4	152.7	1,305.4
Difference from 2014/2015 to 2015/2016	10.2 (9.6%)	0.0	6.0

### Student Programs

Students Identified as Gifted/Talented	9.6%	11.9%	14.2%
Students in Special Education	20.0%	23.5%	15.6%
Students as English Language Learners (ELL)	0.9%	3.3%	7.2%

### Classroom Teachers & Professional Support (FTE)

	District	Community Group Avg.	State Avg.
Non-Special Ed. Teachers:			
Number of Teachers	7.5	11.8	72.7
Avg. Salary (w/ Fringe)	\$45,147	\$43,301	\$45,017
Teachers w/ Advanced Degree(s)	6.7%	24.4%	25.5%
Avg. Years of Experience	14.5	14.4	13.1
Special Education Teachers	0.0	0.7	8.6
Counselors	0.0	0.3	3.1
Other Certified Professional Staff	0.5	0.8	6.9

### School & District Administration (FTE)

School & District Administrators	1.0	1.4	7.0
Average Salary per Administrative FTE	\$75,759	\$77,382	\$79,182
Teachers per Administrator	7.5	9.1	11.7

### District Revenues (ALL FUNDS)

Local & County	33.9%	34.7%	42.1%
State	51.5%	47.7%	46.3%
Federal	14.6%	17.5%	11.6%

### District Expenditures (ALL FUNDS)

	District		Community Group Avg.		State Average	
	%	\$/ADM	%	\$/ADM	%	\$/ADM
Instruction	53.6%	\$4,521	52.1%	\$5,490	53.7%	\$4,208
Student Support	2.5%	\$212	5.1%	\$532	7.1%	\$555
Instructional Support	1.2%	\$98	2.7%	\$289	3.8%	\$298
District Administration	10.1%	\$850	7.0%	\$733	3.0%	\$234
School Administration	3.3%	\$282	4.7%	\$490	5.8%	\$457
District Support	18.2%	\$1,536	18.9%	\$1,989	17.6%	\$1,375
Other	11.1%	\$932	9.7%	\$1,021	9.0%	\$706
<b>Total</b>	<b>100.0%</b>	<b>\$8,431</b>	<b>100.0%</b>	<b>\$10,544</b>	<b>100.0%</b>	<b>\$7,834</b>
Debt Service in Addition to Above		\$528		\$290		\$847

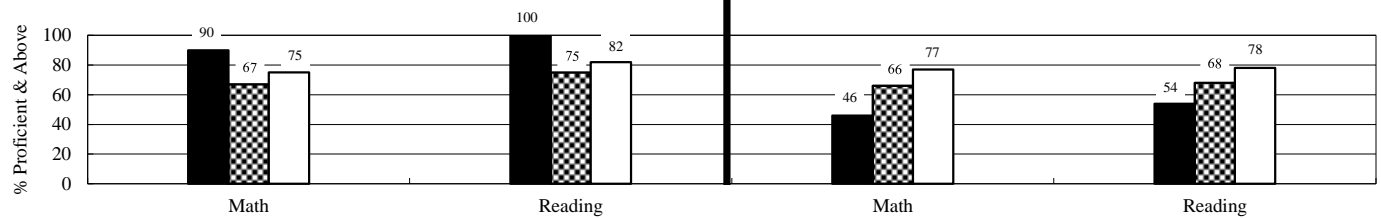
### Average HS Curriculum (Units Offered in Selected Subject Areas)

	District	Community Group Avg.	State Average
Language Arts	No High School	6.0	8.0
Science	No High School	3.8	6.2
Math	No High School	4.5	6.6
Social Studies	No High School	3.9	5.6
Fine Arts	No High School	1.6	6.9
Languages (non-English)	No High School	0.4	2.6
<b>Total</b>	<b>No High School</b>	<b>20.2</b>	<b>35.9</b>

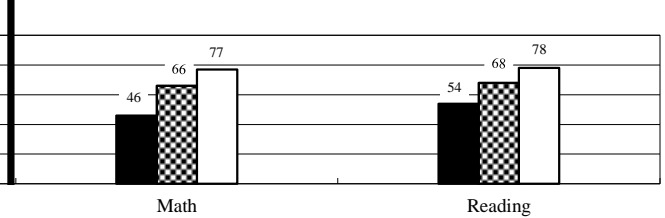
## Student Performance (\*Regular Education Students, Full Academic Year)

District: MONROE

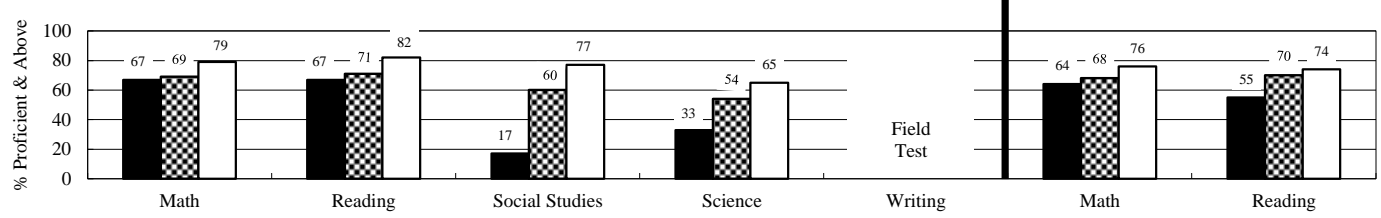
### 3rd Grade Tests\*



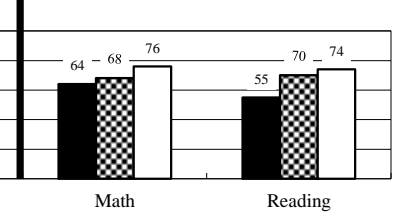
### 4th Grade Tests\*



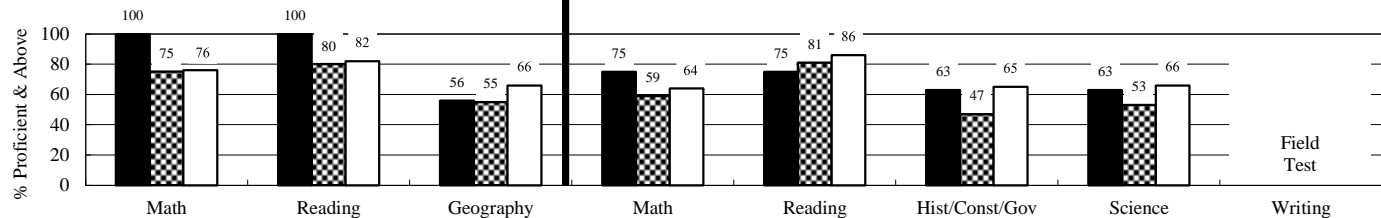
### 5th Grade Tests\*



### 6th Grade Tests\*



### 7th Grade Tests\*

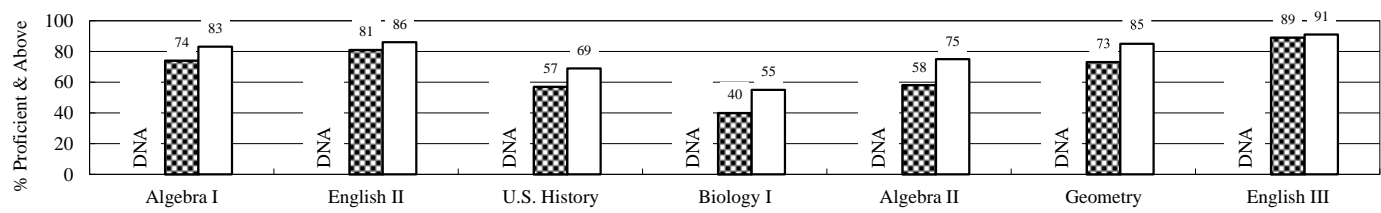


### 8th Grade Tests\*

Students taking Algebra I or higher level math class do not participate in 8th grade math test.

### End-of-Instruction Tests\*

(Students are exempt from certain EOI tests if they passed qualified alternative assessments.)



■ District      ▨ Community Group      □ State

### Additional High School Performance Measures

	District	Community Group Average	State Average
Senior Graduation Rate (2016 Seniors)	No HS	98.7%	98.3%
4-Year Dropout Rate (Class of 2016)	No HS	6.2%	7.2%
Average GPA of HS Seniors (2016 Seniors)	No HS	3.1	3.1
Career-Tech Occupationally-Specific Program Participation Rate (2016 Seniors)	No HS	60.8%	49.5%
Average ACT Score (Class of 2016)	No HS	18.3	20.6
HS Graduates Completing Regents' College-Bound Curriculum (2016 Seniors)	No HS	84.4%	80.8%
Out-of-State College-Going Rate (2016 Seniors)	No HS	4.3%	6.0%
Oklahoma College-Going Rate			
Oklahoma College Freshmen taking at least one remedial course in Math, English, Science, or Reading			
Oklahoma College Freshmen with GPA 2.0 or Above			

*New methodologies are under development.*