

District:

## WHITE OAK

CRAIG County

27455 South 4340 Road  
Vinita, OK 74301-7998  
(918) 256-4484

### Community Characteristics

Community Group: H2

#### Socioeconomic Data

	District Community	State Average
Ethnic Makeup Based upon Fall Enrollment:		
Caucasian	41%	58%
Black	2%	9%
Asian	0%	2%
Hispanic	9%	16%
Native American	48%	14%
Average Property Valuation per ADM (12/2016)	\$154,971	\$49,623
Students Eligible for Free/Reduced Lunch	87%	62%

#### U.S. Census Data

	District	State
American Community Survey (2011-2015 5-Year Estimates):		
District Population	866	7,461
Poverty Rate	15%	17%
Unemployment Rate	7%	6%
Average Household Income	\$52,769	\$63,890
Single-Parent Families	24%	34%
Highest Educational Level for Adults Age 25+		
College Degree	13%	24%
H.S. Diploma w/o College Degree	77%	63%
Less than 12th Grade Education	9%	13%

#### Preparation, Motivation and Parental Support

KG-3rd Graders Receiving Reading Remediation	11%	39%
Average Number of Days Absent per Student	9.5	9.4
Mobility Rate (Incoming Students)	13%	10%
Student Suspension Ratio: (Higher number is better.)		
1 suspension (<= 10 days) per ___ students	None	13.7
1 suspension (> 10 days) per ___ students	None	171.4
Parents Attending at least 1 Parent/Teacher Conf.	56%	74%
Patrons' Volunteer Hours per Student	0.8	3.4

#### Juvenile Offenders & Offenses (OJA)

One out of every ___ students was charged.	None Reported	119.2
Of those charged, each averaged ___ offense(s).	0.0	2.2
Of those charged, ___ were alleged gang members.	0	0.4

### Symbols Used on this Report:

ADM = Average Daily Membership (Average Enrollment)

FTE = Full Time Equivalent

NA = Not Applicable

\*\* = Data Protected by Privacy Laws

FTR = School/District Failed to Respond with Useable Data

DNA = Data Not Available from Providing Agency

RM = Revised Methodology



#### Office of Educational Quality and Accountability

840 Research Parkway, Suite 455  
Oklahoma City, OK 73104  
(405) 522-5399 Fax: (405) 525-0373  
Web Address: www.EdProfiles.info

### District Educational Process

#### Grade Organization, District Area & Enrollment

This district offered grades EC-8 in school year 2015-2016. It was comprised of 1 Elementary School(s), 0 MS/JHS, and 0 High School(s). The district covered 115 square miles, with 0.4 students per square mile.

	District	Community Group Avg.	State Avg.
2014/2015 Average Enrollment (ADM)	42.7	152.8	1,299.4
2015/2016 Average Enrollment (ADM)	44.3	152.7	1,305.4
Difference from 2014/2015 to 2015/2016	1.6 (3.8%)	0.0	6.0

#### Student Programs

Students Identified as Gifted/Talented	6.5%	11.9%	14.2%
Students in Special Education	21.7%	23.5%	15.6%
Students as English Language Learners (ELL)	0.0%	3.3%	7.2%

#### Classroom Teachers & Professional Support (FTE)

	District	Community Group Avg.	State Avg.
Non-Special Ed. Teachers:			
Number of Teachers	4.9	11.8	72.7
Avg. Salary (w/ Fringe)	\$41,212	\$43,301	\$45,017
Teachers w/ Advanced Degree(s)	0.0%	24.4%	25.5%
Avg. Years of Experience	11.3	14.4	13.1
Special Education Teachers	0.1	0.7	8.6
Counselors	0.0	0.3	3.1
Other Certified Professional Staff	0.2	0.8	6.9

#### School & District Administration (FTE)

School & District Administrators	0.1	1.4	7.0
Average Salary per Administrative FTE	\$206,970	\$77,382	\$79,182
Teachers per Administrator	50.0	9.1	11.7

#### District Revenues (ALL FUNDS)

Local & County	55.4%	34.7%	42.1%
State	25.9%	47.7%	46.3%
Federal	18.7%	17.5%	11.6%

#### District Expenditures (ALL FUNDS)

	District		Community Group Avg.		State Average	
	%	\$/ADM	%	\$/ADM	%	\$/ADM
Instruction	49.7%	\$7,167	52.1%	\$5,490	53.7%	\$4,208
Student Support	5.4%	\$776	5.1%	\$532	7.1%	\$555
Instructional Support	1.1%	\$159	2.7%	\$289	3.8%	\$298
District Administration	10.2%	\$1,475	7.0%	\$733	3.0%	\$234
School Administration	2.5%	\$364	4.7%	\$490	5.8%	\$457
District Support	20.3%	\$2,931	18.9%	\$1,989	17.6%	\$1,375
Other	10.7%	\$1,549	9.7%	\$1,021	9.0%	\$706
<b>Total</b>	<b>100.0%</b>	<b>\$14,422</b>	<b>100.0%</b>	<b>\$10,544</b>	<b>100.0%</b>	<b>\$7,834</b>
Debt Service in Addition to Above		\$0		\$290		\$847

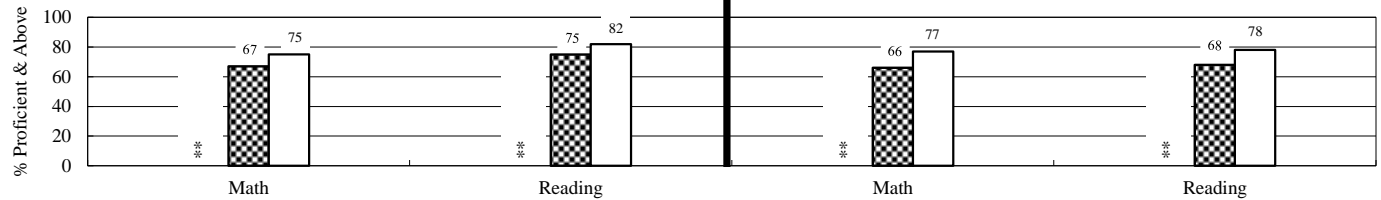
#### Average HS Curriculum (Units Offered in Selected Subject Areas)

	District	Community Group Avg.	State Average
Language Arts	No High School	6.0	8.0
Science	No High School	3.8	6.2
Math	No High School	4.5	6.6
Social Studies	No High School	3.9	5.6
Fine Arts	No High School	1.6	6.9
Languages (non-English)	No High School	0.4	2.6
<b>Total</b>	<b>No High School</b>	<b>20.2</b>	<b>35.9</b>

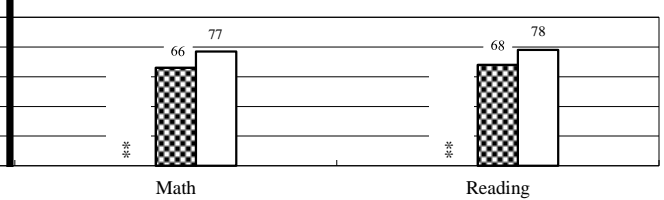
## Student Performance (\*Regular Education Students, Full Academic Year)

District: WHITE OAK

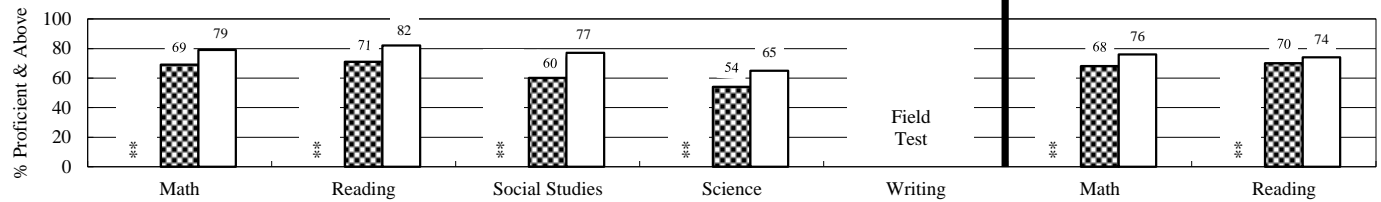
### 3rd Grade Tests\*



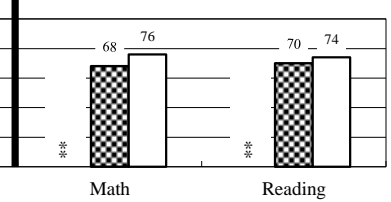
### 4th Grade Tests\*



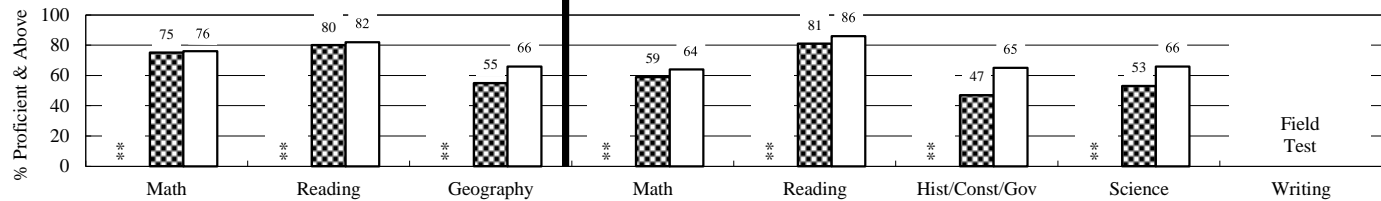
### 5th Grade Tests\*



### 6th Grade Tests\*



### 7th Grade Tests\*

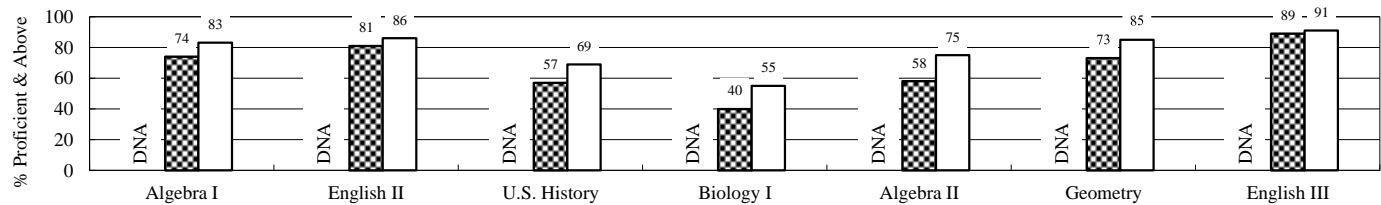


### 8th Grade Tests\*

Students taking Algebra I or higher level math class do not participate in 8th grade math test.

### End-of-Instruction Tests\*

(Students are exempt from certain EOI tests if they passed qualified alternative assessments.)



District
  Community Group
  State

### Additional High School Performance Measures

	District	Community Group Average	State Average
Senior Graduation Rate (2016 Seniors)	No HS	98.7%	98.3%
4-Year Dropout Rate (Class of 2016)	No HS	6.2%	7.2%
Average GPA of HS Seniors (2016 Seniors)	No HS	3.1	3.1
Career-Tech Occupationally-Specific Program Participation Rate (2016 Seniors)	No HS	60.8%	49.5%
Average ACT Score (Class of 2016)	No HS	18.3	20.6
HS Graduates Completing Regents' College-Bound Curriculum (2016 Seniors)	No HS	84.4%	80.8%
Out-of-State College-Going Rate (2016 Seniors)	No HS	4.3%	6.0%
Oklahoma College-Going Rate			
Oklahoma College Freshmen taking at least one remedial course in Math, English, Science, or Reading			
Oklahoma College Freshmen with GPA 2.0 or Above			

*New methodologies are under development.*