

District:

**PEAVINE**

**ADAIR County**

Post Office Box 389  
Stilwell, OK 74960-0389  
(918) 696-7818

## Community Characteristics

**Community Group: H2**

### Socioeconomic Data

	District Community	State Average
Ethnic Makeup Based upon Fall Enrollment:		
Caucasian	30%	58%
Black	0%	9%
Asian	1%	2%
Hispanic	8%	16%
Native American	61%	14%
Average Property Valuation per ADM (12/2016)	\$25,100	\$49,623
Students Eligible for Free/Reduced Lunch	90%	62%

### U.S. Census Data

	District	State
American Community Survey (2011-2015 5-Year Estimates):		
District Population	1,365	7,461
Poverty Rate	21%	17%
Unemployment Rate	3%	6%
Average Household Income	\$46,992	\$63,890
Single-Parent Families	27%	34%
Highest Educational Level for Adults Age 25+		
College Degree	14%	24%
H.S. Diploma w/o College Degree	66%	63%
Less than 12th Grade Education	20%	13%

### Preparation, Motivation and Parental Support

KG-3rd Graders Receiving Reading Remediation	46%	39%
Average Number of Days Absent per Student	10.2	9.4
Mobility Rate (Incoming Students)	28%	10%
Student Suspension Ratio: ( <i>Higher number is better.</i> )		
1 suspension (<= 10 days) per ___ students	None	13.7
1 suspension (> 10 days) per ___ students	None	171.4
Parents Attending at least 1 Parent/Teacher Conf.	20%	74%
Patrons' Volunteer Hours per Student	0.4	3.4

### Juvenile Offenders & Offenses (OJA)

One out of every ___ students was charged.	126.0	119.2
Of those charged, each averaged ___ offense(s).	1.0	2.2
Of those charged, ___ were alleged gang members.	1	0.4

## Symbols Used on this Report:

ADM = Average Daily Membership (Average Enrollment)

FTE = Full Time Equivalent

NA = Not Applicable

\*\* = Data Protected by Privacy Laws

FTR = School/District Failed to Respond with Useable Data

DNA = Data Not Available from Providing Agency

RM = Revised Methodology

## District Educational Process

### Grade Organization, District Area & Enrollment

This district offered grades EC-8 in school year 2015-2016. It was comprised of 1 Elementary School(s), 0 MS/JHS, and 0 High School(s). The district covered 26 square miles, with 5.2 students per square mile.

	District	Community Group Avg.	State Avg.
2014/2015 Average Enrollment (ADM)	130.2	152.8	1,299.4
2015/2016 Average Enrollment (ADM)	135.5	152.7	1,305.4
Difference from 2014/2015 to 2015/2016	5.3 (4.1%)	0.0	6.0

### Student Programs

Students Identified as Gifted/Talented	13.5%	11.9%	14.2%
Students in Special Education	22.2%	23.5%	15.6%
Students as English Language Learners (ELL)	13.5%	3.3%	7.2%

### Classroom Teachers & Professional Support (FTE)

	District	Community Group Avg.	State Avg.
Non-Special Ed. Teachers:			
Number of Teachers	11.2	11.8	72.7
Avg. Salary (w/ Fringe)	\$42,292	\$43,301	\$45,017
Teachers w/ Advanced Degree(s)	30.4%	24.4%	25.5%
Avg. Years of Experience	21.1	14.4	13.1
Special Education Teachers	0.4	0.7	8.6
Counselors	0.0	0.3	3.1
Other Certified Professional Staff	0.2	0.8	6.9

### School & District Administration (FTE)

School & District Administrators	1.2	1.4	7.0
Average Salary per Administrative FTE	\$27,300	\$77,382	\$79,182
Teachers per Administrator	9.7	9.1	11.7

### District Revenues (ALL FUNDS)

Local & County	14.3%	34.7%	42.1%
State	60.2%	47.7%	46.3%
Federal	25.5%	17.5%	11.6%

### District Expenditures (ALL FUNDS)

	District		Community Group Avg.		State Average	
	%	\$/ADM	%	\$/ADM	%	\$/ADM
Instruction	55.9%	\$5,802	52.1%	\$5,490	53.7%	\$4,208
Student Support	6.2%	\$642	5.1%	\$532	7.1%	\$555
Instructional Support	5.4%	\$564	2.7%	\$289	3.8%	\$298
District Administration	3.3%	\$341	7.0%	\$733	3.0%	\$234
School Administration	0.0%	\$4	4.7%	\$490	5.8%	\$457
District Support	18.6%	\$1,934	18.9%	\$1,989	17.6%	\$1,375
Other	10.5%	\$1,095	9.7%	\$1,021	9.0%	\$706
<b>Total</b>	<b>100.0%</b>	<b>\$10,381</b>	<b>100.0%</b>	<b>\$10,544</b>	<b>100.0%</b>	<b>\$7,834</b>
Debt Service in Addition to Above		\$0		\$290		\$847

### Average HS Curriculum (Units Offered in Selected Subject Areas)

	District	Community Group Avg.	State Average
Language Arts	No High School	6.0	8.0
Science	No High School	3.8	6.2
Math	No High School	4.5	6.6
Social Studies	No High School	3.9	5.6
Fine Arts	No High School	1.6	6.9
Languages (non-English)	No High School	0.4	2.6
<b>Total</b>	<b>No High School</b>	<b>20.2</b>	<b>35.9</b>



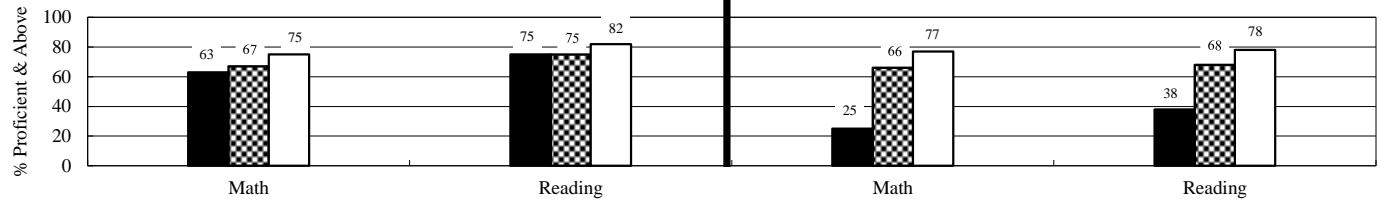
**Office of Educational  
Quality and Accountability**

840 Research Parkway, Suite 455  
Oklahoma City, OK 73104  
(405) 522-5399 Fax: (405) 525-0373  
Web Address: www.EdProfiles.info

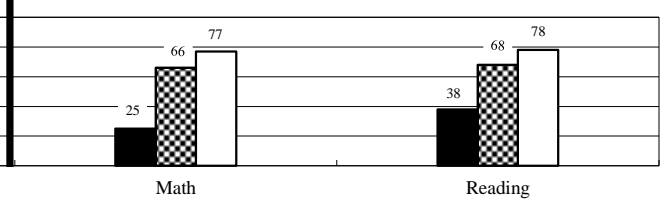
## Student Performance (\*Regular Education Students, Full Academic Year)

District: PEAVINE

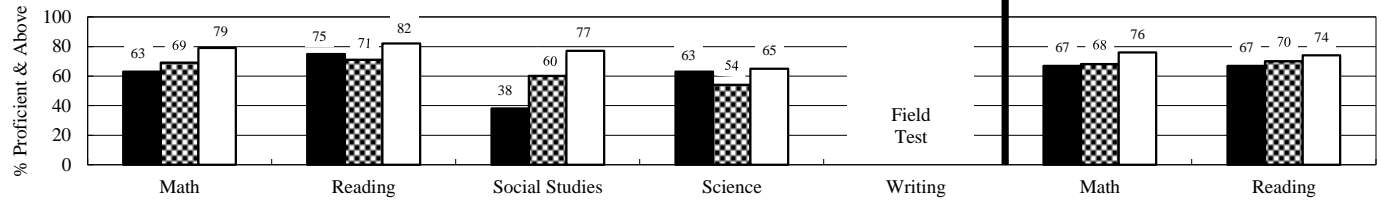
### 3rd Grade Tests\*



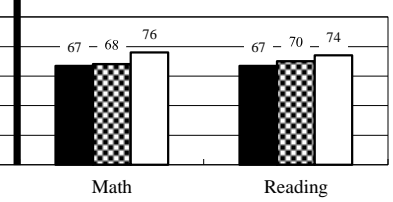
### 4th Grade Tests\*



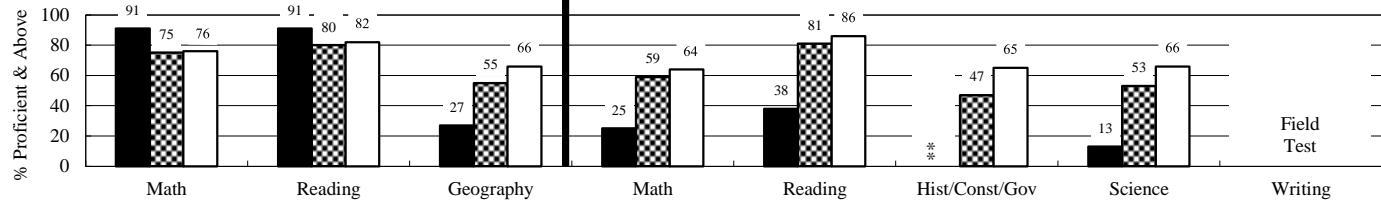
### 5th Grade Tests\*



### 6th Grade Tests\*



### 7th Grade Tests\*

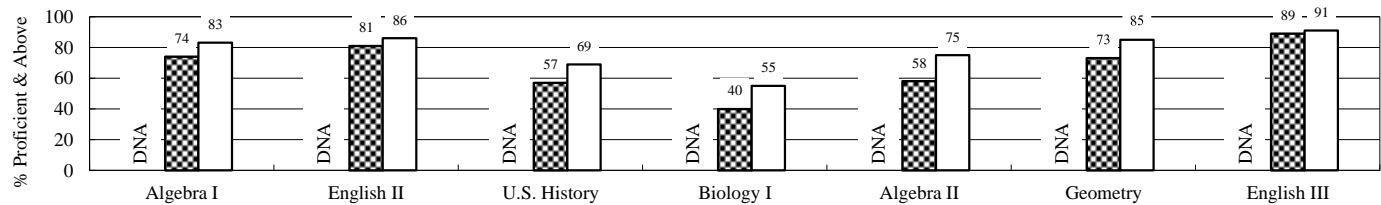


### 8th Grade Tests\*

Students taking Algebra I or higher level math class do not participate in 8th grade math test.

### End-of-Instruction Tests\*

(Students are exempt from certain EOI tests if they passed qualified alternative assessments.)



■ District      ▨ Community Group      □ State

### Additional High School Performance Measures

	District	Community Group Average	State Average
Senior Graduation Rate (2016 Seniors)	No HS	98.7%	98.3%
4-Year Dropout Rate (Class of 2016)	No HS	6.2%	7.2%
Average GPA of HS Seniors (2016 Seniors)	No HS	3.1	3.1
Career-Tech Occupationally-Specific Program Participation Rate (2016 Seniors)	No HS	60.8%	49.5%
Average ACT Score (Class of 2016)	No HS	18.3	20.6
HS Graduates Completing Regents' College-Bound Curriculum (2016 Seniors)	No HS	84.4%	80.8%
Out-of-State College-Going Rate (2016 Seniors)	No HS	4.3%	6.0%
Oklahoma College-Going Rate			
Oklahoma College Freshmen taking at least one remedial course in Math, English, Science, or Reading			
Oklahoma College Freshmen with GPA 2.0 or Above			

*New methodologies are under development.*