



# 2011 SCHOOL REPORT CARD

## Education Oversight Board / Office of Accountability

655 Research Parkway, Suite 301, Oklahoma City, OK, 73104 (405) 225-9470 Fax: (405) 225-9474 Web: <http://www.SchoolReportCard.org>

### SWEETWATER HIGH SCHOOL (9-12)

#### SWEETWATER PUBLIC SCHOOLS

11107 N HIGHWAY 30, SWEETWATER, OK 73666-6606

Telephone: (580) 534-2272

65-1015-705

## Community Characteristics

### Socioeconomic Data

	School	District	State Average
Ethnic Makeup Based upon Fall Enrollment:			
Caucasian	87%	86%	58%
Black	7%	1%	10%
Asian	0%	0%	2%
Hispanic	0%	7%	12%
Native American	7%	6%	18%
Average Property Valuation per Student (12/2011)		\$522,662	\$41,038
Students Eligible for Free/Reduced Lunch	60%	76%	61%

### U.S. Census Data (American Community Survey 2006-2010 5-Year Estimates Unless Otherwise Noted)

	School	District	State Average
District Population (Census 2010)		466	7,118
Poverty Rate		33%	16%
Unemployment Rate		0%	6%
Average Household Income		\$68,679	\$58,099
Single-Parent Families		23%	32%
Highest Educational Level for Adults Age 25+			
College Degree		20%	23%
H.S. Diploma w/o College Degree		71%	63%
Less than 12th Grade Education		9%	15%

### Preparation, Motivation & Parental Support

	School	District	State Average
1st-3rd Graders Receiving Reading Remediation		14%	34%
Average Number of Days Absent per Student	10.5	8.2	9.7
Mobility Rate (Incoming Students)	12%	9%	10%
Suspension to Student Ratio: ( <b>Higher ratio is better.</b> )			
There was 1 suspension (of 10 days or less) for every ___ students	3.8	17.2	12.6
There was 1 suspension (of more than 10 days) for every ___ students	None	None	147.7
Parents Attending Parent/Teacher Conference	60%	93%	72%
Patrons' Volunteer Hours per Student	0.0	0.0	2.5

### Juvenile Offenders & Offenses (Office of Juvenile Affairs)\*

	School	District	State Average
One out of every ___ students was charged. ( <b>Higher ratio is better.</b> )		None Reported	86.3
Of those charged, each averaged ___ offense(s).		0.0	1.9
Of those charged, ___ were alleged gang members.		0	0.6

\*These statistics are provided as another indicator of the environment in which schools must operate. In most cases the offenses were not committed at school.

#### Symbols Used on this Report

DNA = Data Not Available  
NA = Not Applicable

RM = Revised Methodology  
ADM = Average Daily Membership (Average Enrollment)

FTE = Full Time Equivalent

\*\* = Data Protected by Privacy Laws  
FTR = School/District Failed to Respond with Useable Data

## 2010-2011 School Educational Process

### Classroom & Administration Characteristics

	School	District Total (All Schools)	High School State Average
Fall Enrollment	15	86	361
Non-Special Ed. Teachers (FTE):			
Number of Teachers	5.7	14.1	20.9
Average Salary (w/ Fringe)	\$44,483	\$43,234	\$44,880
Teachers with Advanced Degree(s)	47.5%	25.6%	30.5%
Average Years of Experience	12.8	13.0	13.4
Students in Special Education	13.3%	15.1%	14.6%
Special Education Teachers (FTE)	0.0	0.4	2.8
Counselors (FTE)	0.0	0.0	1.3
Other Certified Professional Staff (FTE)	0.1	0.2	1.3
Administrators (FTE)	0.0	1.1	1.7

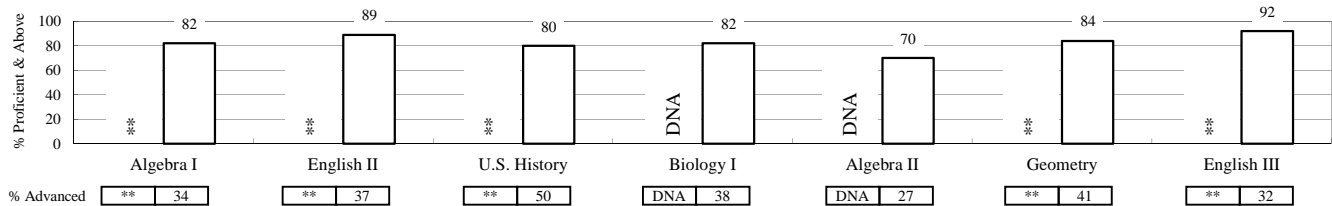
### High School Curriculum (Units Offered in Selected Subject Areas)

Language Arts	8.0	8.1
Science	4.0	6.5
Math	4.0	6.7
Social Studies	5.5	5.8
Fine Arts	2.0	7.2
Languages (non-English)	0.0	3.0
<b>Total</b>	<b>23.5</b>	<b>37.3</b>

## 2010-2011 Student Performance

### High School End-of-Instruction Tests\*

Results for non-high school students may be posted on the K-8 report card.



\*Test results were only calculated for "regular full academic year" students.

### Additional High School Performance Measures

	This School	District	High School State Average
Senior Graduation Rate (2011 Seniors)	100.0%	100.0%	97.9%
4-Year Dropout Rate (Class of 2011)	0.0%	0.0%	10.2%
Average GPA of HS Seniors (2011 Seniors)	3.3	3.3	3.0
Career-Tech Occupationally-Specific Program Participation (2010 Seniors)	71.4%	71.4%	53.8%
Average ACT Score (Class of 2011)	**	**	20.8
HS Graduates Completing Regents' College-Bound Curriculum (2011 Seniors)	100.0%	100.0%	80.6%
Out-of-State College-Going Rate (2011 Seniors)	0.0%	0.0%	6.6%
Oklahoma College-Going Rate ('08-'10)	45.5%	45.5%	47.8%
Oklahoma College Freshmen taking at least one remedial course in Math, English, Science, or Reading ('08-'10)	**	**	39.2%