

District:

**TUSKAHOMA****PUSHMATAHA County**

Hwy 271 Tuskahoma School Rd.  
Tuskahoma, OK 74574  
(918) 569-7737

## Community Characteristics

Community Group: **H2**

### Socioeconomic Data

	District Community	State Average
Ethnic Makeup Based upon Fall Enrollment:		
Caucasian	68%	59%
Black	5%	9%
Asian	0%	2%
Hispanic	0%	16%
Native American	28%	15%
Average Property Valuation per ADM (12/2015)	\$39,520	\$47,329
Students Eligible for Free/Reduced Lunch	85%	61%

### U.S. Census Data

American Community Survey (2010-2014 5-Year Estimates):		
District Population	655	7,387
Poverty Rate	20%	17%
Unemployment Rate	13%	7%
Average Household Income	\$41,033	\$62,871
Single-Parent Families	21%	34%
Highest Educational Level for Adults Age 25+		
College Degree	14%	24%
H.S. Diploma w/o College Degree	73%	63%
Less than 12th Grade Education	14%	13%

### Preparation, Motivation and Parental Support

KG-3rd Graders Receiving Reading Remediation	34%	39%
Average Number of Days Absent per Student	4.3	9.8
Mobility Rate (Incoming Students)	10%	10%
Suspension to Student Ratio: ( <i>Higher number is better.</i> )		
1 suspension (<= 10 days) per ___ students	None	13.1
1 suspension (> 10 days) per ___ students	None	155.1
Parents Attending at least 1 Parent/Teacher Conf.	80%	74%
Patrons' Volunteer Hours per Student	1.6	3.4

### Juvenile Offenders & Offenses (OJA)

One out of every ___ students was charged.	None Reported	108.6
Of those charged, each averaged ___ offense(s).	0.0	2.1
Of those charged, ___ were alleged gang members.	0	0.4

## Symbols Used on this Report:

ADM = Average Daily Membership (Average Enrollment)

FTE = Full Time Equivalent

NA = Not Applicable

\*\* = Data Protected by Privacy Laws

FTR = School/District Failed to Respond with Useable Data

DNA = Data Not Available from Providing Agency

RM = Revised Methodology



### Office of Educational Quality and Accountability

840 Research Parkway, Suite 455  
Oklahoma City, OK 73104  
(405) 522-5399 Fax: (405) 525-0373  
Web Address: www.EdProfiles.info

## District Educational Process

### Grade Organization, District Area & Enrollment

This district offered grades EC-8 in school year 2014-2015. It was comprised of 1 Elementary School(s), 0 MS/JHS, and 0 High School(s). The district covered 78 square miles, with 1.0 students per square mile.

	District	Community Group Avg.	State Avg.
2013/2014 Average Enrollment (ADM)	106.1	156.0	1,292.2
2014/2015 Average Enrollment (ADM)	81.8	152.8	1,299.4
Difference from 2013/2014 to 2014/2015	-24.3 (-22.9%)	-3.2	7.3

### Student Programs

Students Identified as Gifted/Talented	11.3%	13.1%	14.2%
Students in Special Education	35.0%	23.3%	15.4%
Students as English Language Learners (ELL)	0.0%	3.3%	7.1%

### Classroom Teachers & Professional Support (FTE)

Non-Special Ed. Teachers:			
Number of Teachers	6.0	11.8	72.4
Avg. Salary (w/ Fringe)	\$45,946	\$42,990	\$44,754
Teachers w/ Advanced Degree(s)	16.4%	23.1%	24.5%
Avg. Years of Experience	13.6	13.1	12.2
Special Education Teachers	1.0	0.7	8.5
Counselors	0.0	0.3	3.1
Other Certified Professional Staff	0.0	0.8	6.9

### School & District Administration (FTE)

School & District Administrators	0.5	1.3	6.9
Average Salary per Administrative FTE	\$104,362	\$76,834	\$78,349
Teachers per Administrator	13.4	9.4	11.7

### District Revenues (ALL FUNDS)

Local & County	15.9%	32.6%	40.8%
State	70.7%	50.0%	47.7%
Federal	13.5%	17.5%	11.6%

### District Expenditures (ALL FUNDS)

	District		Community Group Avg.		State Average	
	%	\$/ADM	%	\$/ADM	%	\$/ADM
Instruction	55.3%	\$7,049	51.8%	\$5,499	53.0%	\$4,177
Student Support	3.2%	\$408	4.8%	\$508	7.0%	\$548
Instructional Support	0.9%	\$111	2.6%	\$275	3.8%	\$296
District Administration	7.7%	\$984	6.7%	\$713	2.9%	\$231
School Administration	0.0%	\$0	4.4%	\$469	5.7%	\$451
District Support	22.1%	\$2,814	19.4%	\$2,059	17.9%	\$1,411
Other	10.8%	\$1,372	10.3%	\$1,087	9.7%	\$761
<b>Total</b>	<b>100.0%</b>	<b>\$12,738</b>	<b>100.0%</b>	<b>\$10,610</b>	<b>100.0%</b>	<b>\$7,875</b>
Debt Service in Addition to Above		\$0		\$232		\$845

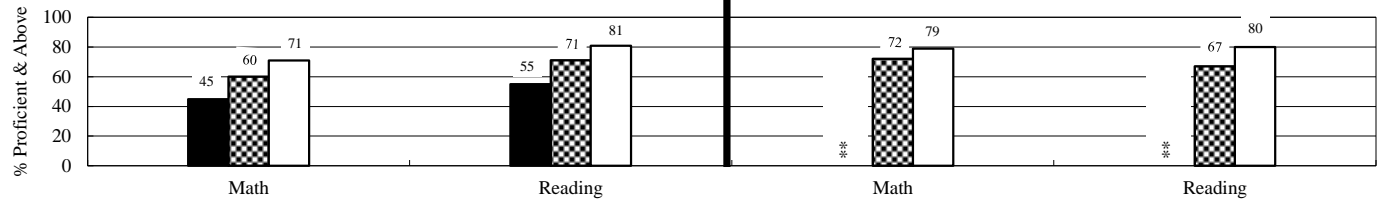
### Average HS Curriculum (Units Offered in Selected Subject Areas)

	District	Community Group Avg.	State Average
Language Arts	No High School	5.9	7.8
Science	No High School	3.9	6.1
Math	No High School	4.4	6.5
Social Studies	No High School	3.9	5.4
Fine Arts	No High School	1.8	7.0
Languages (non-English)	No High School	0.5	2.5
<b>Total</b>	<b>No High School</b>	<b>20.4</b>	<b>35.3</b>

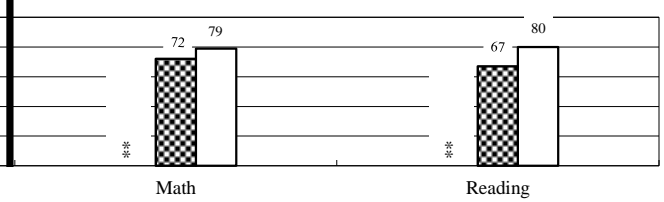
## Student Performance (Regular Education Students, Full Academic Year)

District: TUSKAHOMA

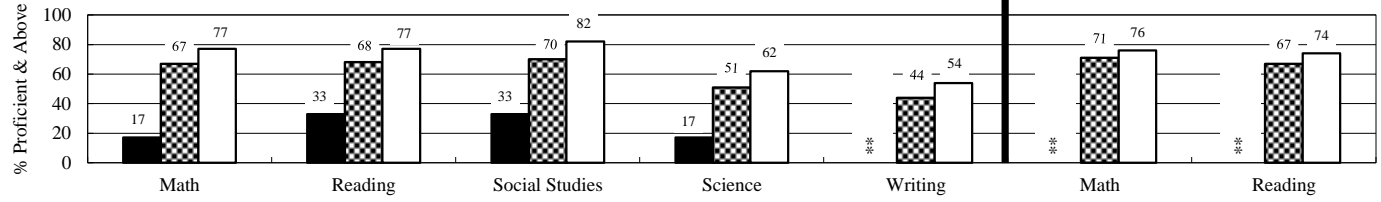
### 3rd Grade Tests\*



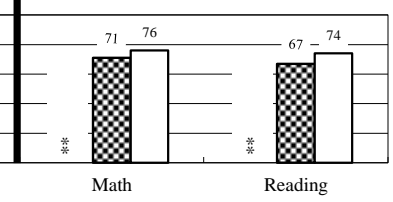
### 4th Grade Tests\*



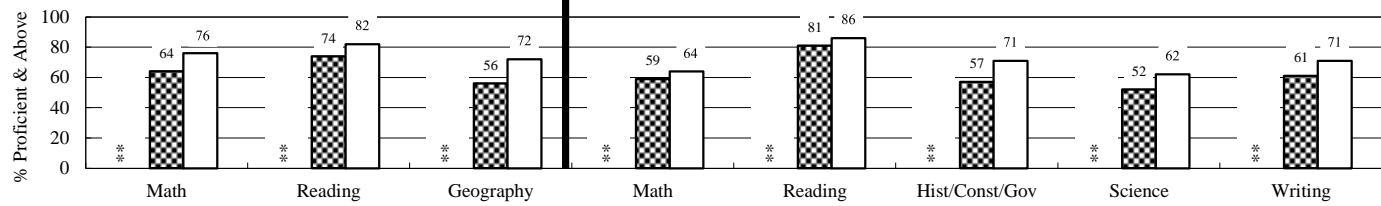
### 5th Grade Tests\*



### 6th Grade Tests\*



### 7th Grade Tests\*

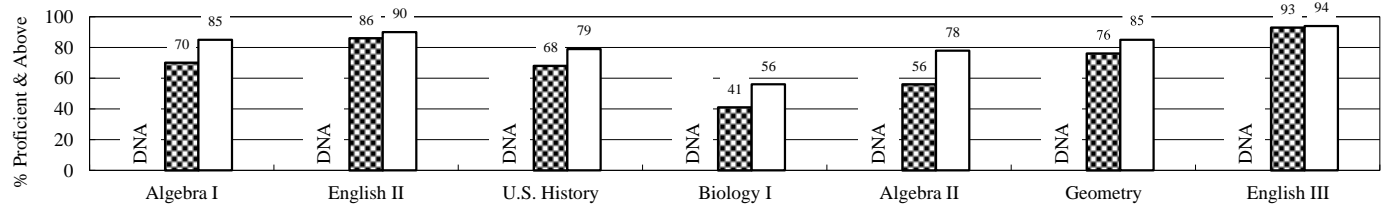


### 8th Grade Tests\*

(Students taking Algebra I do not participate in 8th grade math test.)

### End-of-Instruction Tests\*

(Students are exempt from certain EOI tests if they passed qualified alternative assessments.)



■ District      ▨ Community Group      □ State

### Additional High School Performance Measures

	District	Community Group Average	State Average
Senior Graduation Rate (2015 Seniors)	No HS	98.7%	98.2%
4-Year Dropout Rate (Class of 2015)	No HS	7.9%	7.8%
Average GPA of HS Seniors (2015 Seniors)	No HS	3.1	3.1
Career-Tech Occupationally-Specific Program Participation Rate (2015 Seniors)	No HS	69.2%	49.5%
Average ACT Score (Class of 2015)	No HS	18.7	20.7
HS Graduates Completing Regents' College-Bound Curriculum (2015 Seniors)	No HS	86.0%	80.5%
Out-of-State College-Going Rate (2015 Seniors)	No HS	4.3%	5.9%
Oklahoma College-Going Rate	<i>New methodologies are under development.</i>		
Oklahoma College Freshmen taking at least one remedial course in Math, English, Science, or Reading			
Oklahoma College Freshmen with GPA 2.0 or Above			